

Version: 1.1

SUNMI Cloud Printer Setup User's Guide

目 录

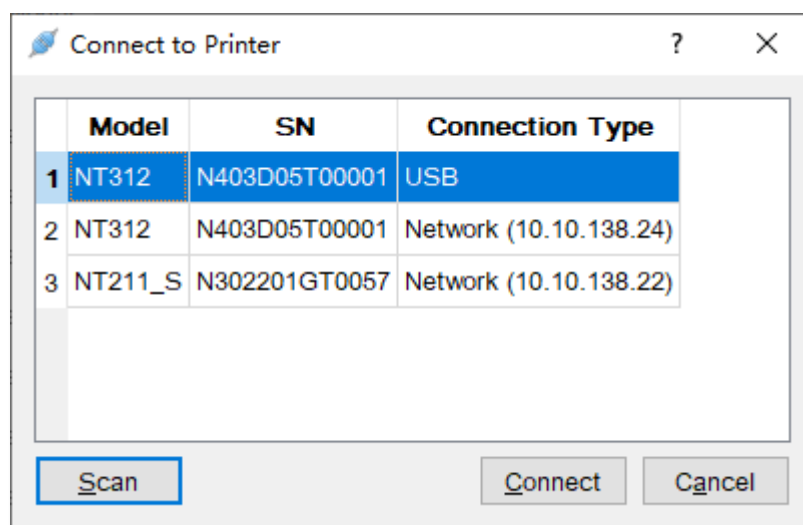
1.	Connect to the Printer.....	3
2.	View Device Information.....	4
3.	Configure Ethernet Static IP.....	5
4.	Configure 4G Network.....	6
5.	Configure Wi-Fi Static IP.....	7
6.	Configure Wi-Fi SSID.....	8
7.	Serial Port Settings.....	9
8.	Print Settings.....	10
8.1.	Default Character Set.....	11
8.2.	Print Density and Quality.....	11
8.3.	Paper Layout.....	11
8.4.	Paper Not Taken.....	11

1. Connect to the Printer

Before setting up the printer with the printer setup utility, you need to connect to the printer first.

Power on the printer and connect the printer to the computer with a type-C USB cable, or connect the printer to the same LAN (wireless or wired) as the computer.

Run sunmi-cloud-printer-setup.exe, and then click the “Connect” button on the toolbar. A dialog box will pop-up with the printers currently connected to the computer listed, as shown in the figure below.



If the printer does not appear in the list, please check whether the printer has been powered on, the USB cable has been connected correctly, or the printer has been connected to the same LAN as the computer, and then click the “Scan” button again to refresh the list.

In the “Connection Type” column, the IP address of the printer is shown.

Select the printer you want to connect to and click the “Connect” button.

2. View Device Information

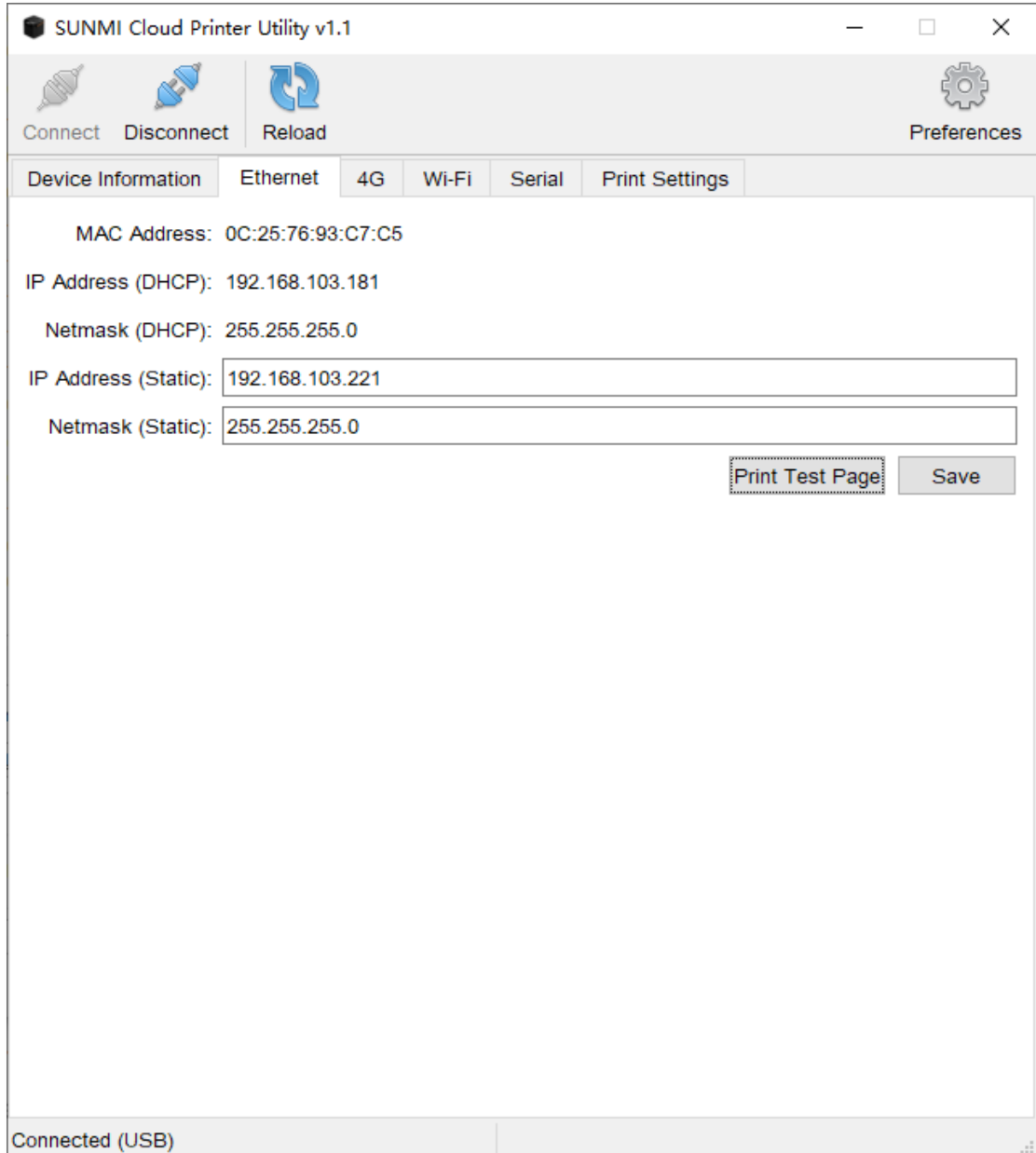
In the “Device Information” page, the printer model, serial number, software and hardware version number and other information is shown.

This information is read only and can't be modified.



3. Configure Ethernet Static IP

In the “Ethernet” page, the dynamic and static IP addresses of the Ethernet interface are shown.



SUNMI Cloud Printer Utility v1.1

Connect Disconnect Reload Preferences

Device Information Ethernet 4G Wi-Fi Serial Print Settings

MAC Address: 0C:25:76:93:C7:C5

IP Address (DHCP): 192.168.103.181

Netmask (DHCP): 255.255.255.0

IP Address (Static): 192.168.103.221

Netmask (Static): 255.255.255.0

Print Test Page Save

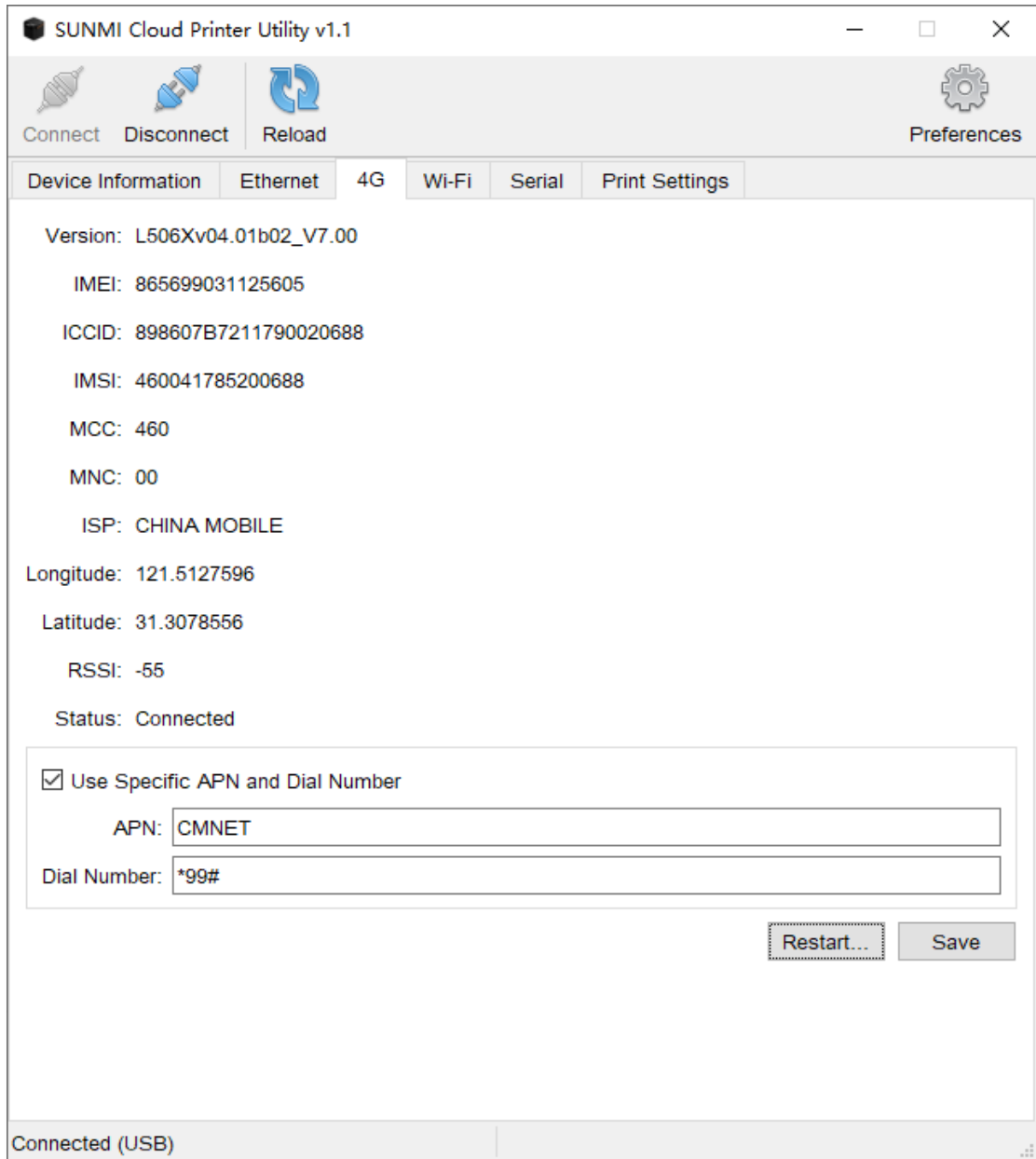
Connected (USB)

After modifying the static IP address and netmask, you must click the “Save” button to apply the changes.

Click the “Print Test Page” button to perform a print test via Ethernet.

4. Configure 4G Network

In the “4G” page, the 4G network information is shown.



The screenshot shows the 'SUNMI Cloud Printer Utility v1.1' window. The '4G' tab is selected in the top navigation bar. The interface displays various network parameters and a configuration section for APN and Dial Number.

Device Information	Ethernet	4G	Wi-Fi	Serial	Print Settings
<p>Version: L506Xv04.01b02_V7.00</p> <p>IMEI: 865699031125605</p> <p>ICCID: 898607B7211790020688</p> <p>IMSI: 460041785200688</p> <p>MCC: 460</p> <p>MNC: 00</p> <p>ISP: CHINA MOBILE</p> <p>Longitude: 121.5127596</p> <p>Latitude: 31.3078556</p> <p>RSSI: -55</p> <p>Status: Connected</p>					
<p><input checked="" type="checkbox"/> Use Specific APN and Dial Number</p> <p>APN: <input type="text" value="CMNET"/></p> <p>Dial Number: <input type="text" value="*99#"/></p> <p><input type="button" value="Restart..."/> <input type="button" value="Save"/></p>					

Connected (USB)

Check the “Use Specific APN and Dial Number”, and set the APN and Dial Number correctly according to your local operator. Click the “Save” button and the “Restart...” button to apply the changes to the 4G module.

5. Configure Wi-Fi Static IP

In the “Wi-Fi” page, the dynamic and static IP addresses of the Wi-Fi interface are shown.

SUNMI Cloud Printer Utility v1.1

Connect Disconnect Reload Preferences

Device Information Ethernet 4G Wi-Fi Serial Print Settings

MAC Address: 0C:25:76:93:C7:C6

IP Address (DHCP): 10.10.138.24

Netmask (DHCP): 255.255.240.0

IP Address (Static): 10.10.138.221

Netmask (Static): 255.255.240.0

SSID: SUNMI

Configure SSID... Print Test Page Save

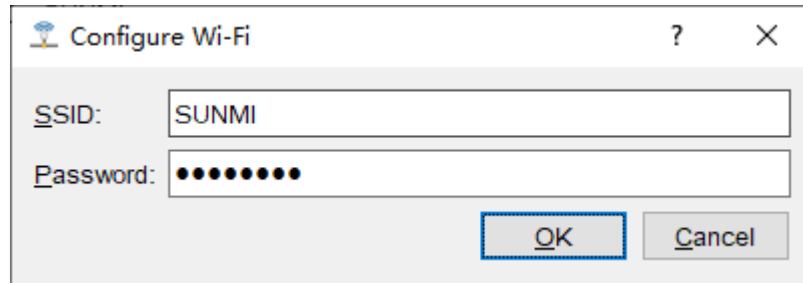
Connected (USB)

After modifying the static IP address and netmask, you must click the “Save” button to apply the changes.

Click the “Print Test Page” button to perform a print test via Wi-Fi.

6. Configure Wi-Fi SSID

In the “Wi-Fi” page, click the “Configure SSID...” button to configure the SSID and password to connect the printer to the Wi-Fi network.



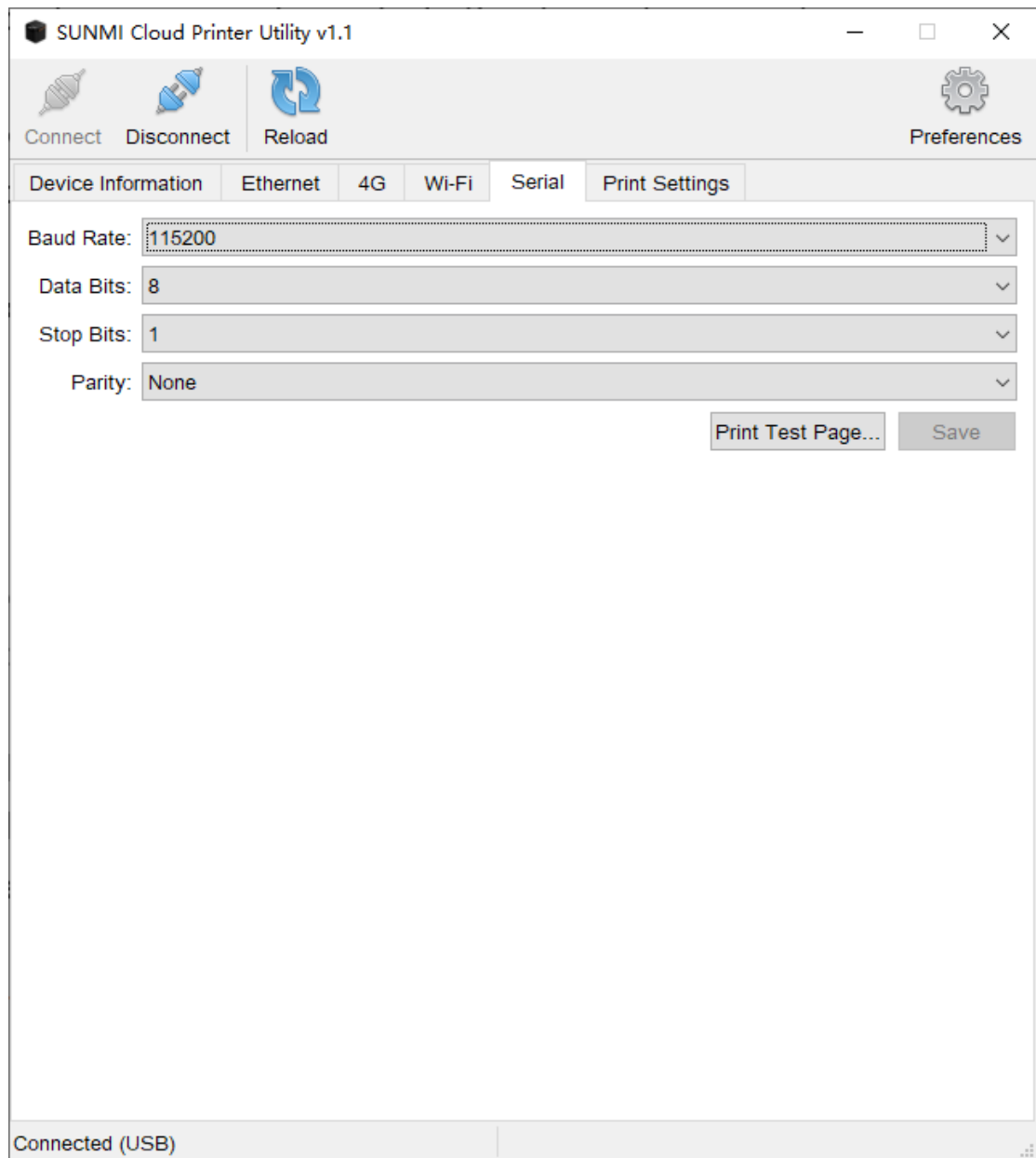
After connecting to the Wi-Fi network, click the “Refresh” button on the toolbar and you should see the allocated IP address.

Click the “Print Test Page” button to perform a print test via Wi-Fi.

7. Serial Port Settings

The printer supports printing via serial port. The default serial port settings are: baud rate 115200, 8 data bits, 1 stop bit, no parity.

If the computer can't match these settings, you can modify the printer's serial port settings to meet the computer's requirement.

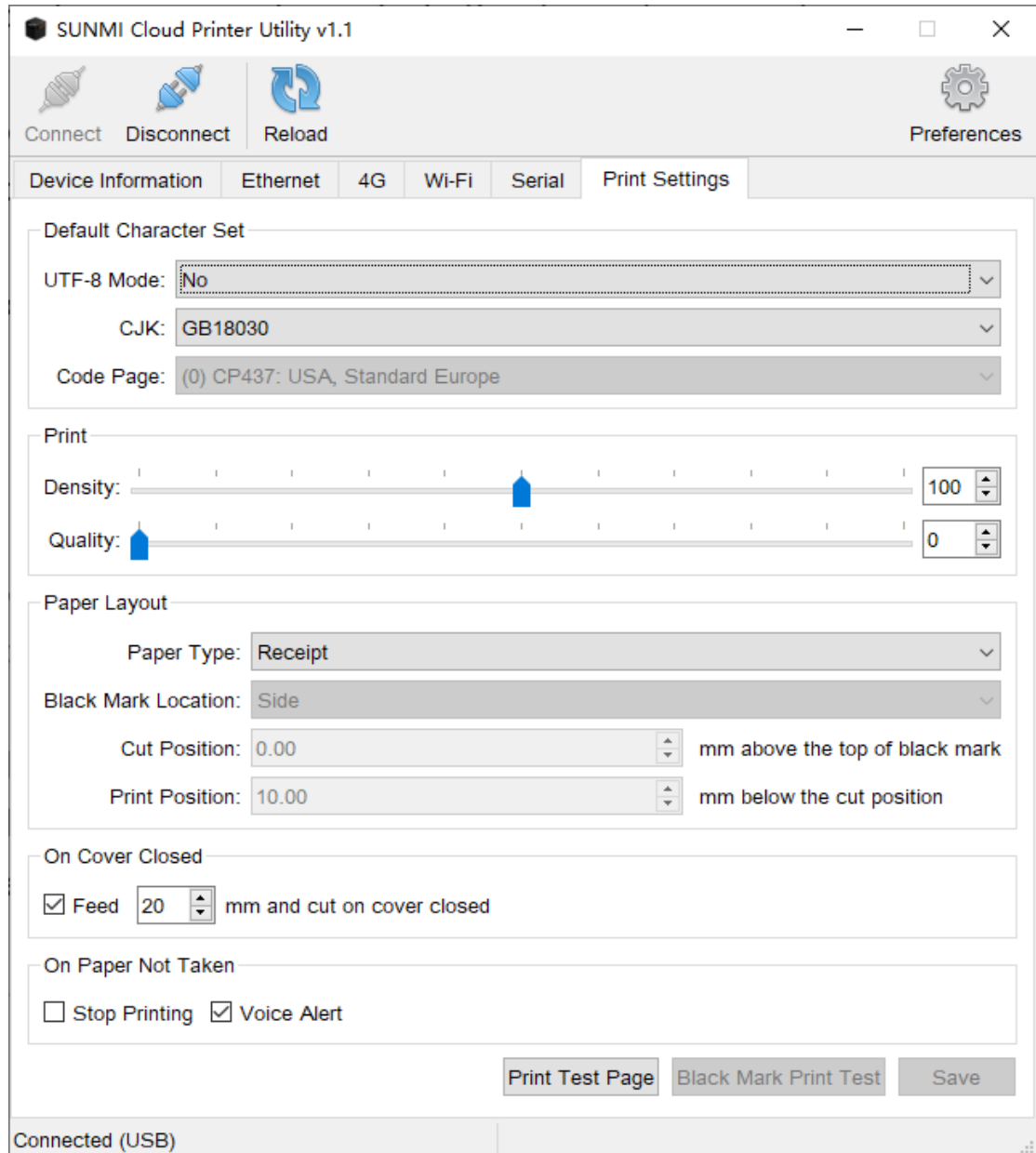


After modifying the settings, click the “Save” button to apply.

Click the “Print Test Page...” button to perform a print test via serial port.

8. Print Settings

In the “Print Settings” page, you can set the default character set, print density and quality, paper layout, etc.



SUNMI Cloud Printer Utility v1.1

Connect Disconnect Reload Preferences

Device Information Ethernet 4G Wi-Fi Serial **Print Settings**

Default Character Set

UTF-8 Mode: No

CJK: GB18030

Code Page: (0) CP437: USA, Standard Europe

Print

Density: 100

Quality: 0

Paper Layout

Paper Type: Receipt

Black Mark Location: Side

Cut Position: 0.00 mm above the top of black mark

Print Position: 10.00 mm below the cut position

On Cover Closed

☒ Feed 20 mm and cut on cover closed

On Paper Not Taken

☐ Stop Printing ☒ Voice Alert

Print Test Page Black Mark Print Test Save

Connected (USB)

After making any changes to the settings, click “Save” button to apply.

8.1. Default Character Set

Set the default character set of the printer.

UTF-8 Mode	CJK Encoding	Code Page	Description
Yes	-	-	Decode with UTF-8
No	GB18030	-	Decode with GB18030
	BIG5	-	Decode with BIG5
	Shift JIS	-	Decode with Shift JIS
	JIS 0208	-	Decode with JIS 0208
	KS C 5601	-	Decode with KS C 5601
	CJK Mode Off	Code Page	Decode character codes 128-255 with Code Page

8.2. Print Density and Quality

The unit of Print Density is percentage, valid value ranges from 50~150. The default density is 100%.

The valid value of Print Quality ranges from 0~100. Quality 0 is the worst print quality, but the print speed is the highest; quality 100 is the best print quality, but the print speed is the slowest.

8.3. Paper Layout

Two types of printing paper are supported: “Receipt” and “Paper with Black Mark”.

“Receipt” is the most common thermal printing paper. After selecting “Receipt”, you can choose whether to automatically feed a certain distance and cut the paper upon the cover is closed.

“Paper with Black Mark” has small black blocks (the black marks) on both sides or in the middle of the paper at constant intervals. After selecting “Paper with Black Mark”, set the position of black mark correctly according to the paper, and set the cutting position and printing position according to your application.

“Cut Position” specifies the distance above the top of the black mark to cut paper in mm. Specify a negative value makes the cut position below the top of the black mark. The valid value ranges from -100.0 ~ 25.0 mm.

“Print Position” specifies how many millimeters below the paper cutting position to start printing. You cannot specify to start printing above the paper cutting position. The value range that can be set is 10.0 ~ 100.0 mm.

Click the “Black Mark Print Test” button to perform a black mark printing test.

8.4. Paper Not Taken

After a ticket has been printed and cut, if the cut paper is not taken away, the alarm light on the printer will keep blinking. You can set whether to play voice reminder and whether printing is allowed on paper not taken.

If the “Stop Printing” check box is checked, you must take away the cut paper before you can continue printing.

If the “Voice Alert” check box is checked, the voice reminder will be played periodically until the cut paper is taken away.

Note:

If a ticket is printed but it is not cut, the Paper Not Taken alarm will not be triggered, the alarm light is off, there is no voice reminder, and printing is allowed.

If a ticket is printed and it is cut, the Paper Not Taken alarm will be triggered. But if the printer's power is recycled, even if the paper is still not taken, the Paper Not Taken alarm will not be triggered.